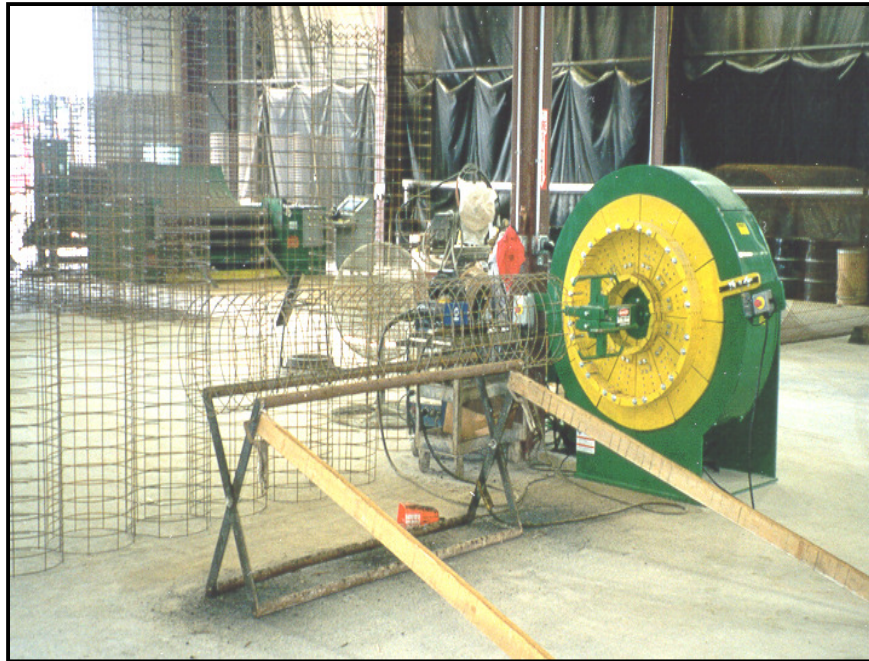




ERMC

828 4th Street
Elk River, MN 55330
Phone (763) 441-1581
Fax (763) 441-1596



CAGE EXPANDERS BY ERMC

ERMC Cage Expanders produce the roundest cage bells in the industry. The secret lies in the design of our shoes. The fingers remain interlocked during the entire expansion process, which means they stay engaged with the mesh. Additional features include friction reducing synthetic slide bearings on the back of the shoe plates, **and** machining of moving components.

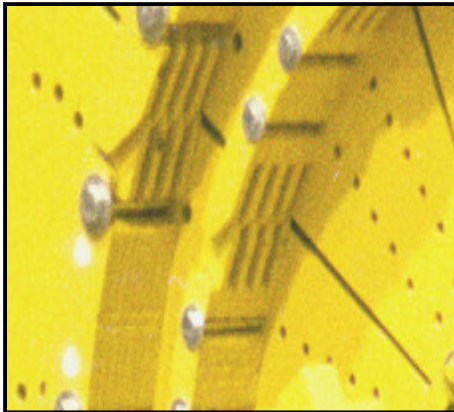
Cage expanders from ERMC are built to provide decades of safe and reliable service. The ERMC Cage Expander also compliments the ERMC Computerized Mesh Roller (CMR)

www.ermc.com



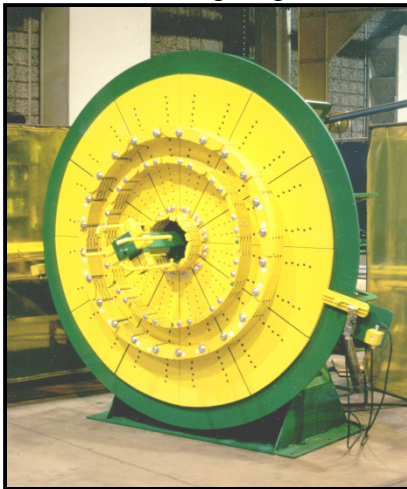
ERMC

828 4th Street
Elk River, MN 55330
Phone (763) 441-1581
Fax (763) 441-1596



INTERLOCKING SHOES

Flat spots are eliminated through the use of curved shoe segments with interlocking fingers



3 SIZES:

- 12" to 36" Pipe Dia.
- 12" to 48" Pipe Dia.
- 12" to 66" Pipe Dia.



EASY SET-UP

Changeover from one size to another is accomplished easily with adjustable thumbwheel stops.



Emergency stops at several locations.