



Manufactured by



ERM

828 4th Street
Elk River, MN 55330
Phone (763) 441-1581
Fax (763) 441-1596

Concrete Batching Control Solutions

Easy Touch controls provide total command of your batch plant. Easy Touch control packages are at work every day producing wet cast, dry cast, zero slump, SCC and even earth moist concrete

Choose from multiple levels of automation to suit your unique application.

- From ***Easy Touch Level I*** with full manual operation, to PC-based ***Easy Touch III*** with SQL data base utilities
- Control various methods of automatic water and material compensation
- Interface with stand alone liquid automatic color dispensation
- Insure compliance with plant certification requirements for batch plant controls



ERM is a nationally recognized producer of high quality equipment. Since 1961 ERM has been building innovative, well-engineered products for the construction industries.

www.ermc.com



Manufactured by

ERMC

828 4th Street
 Elk River, MN 55330
 Phone (763) 441-1581
 Fax (763) 441-1596

Easy Touch Level II Automates Your Batch Plant

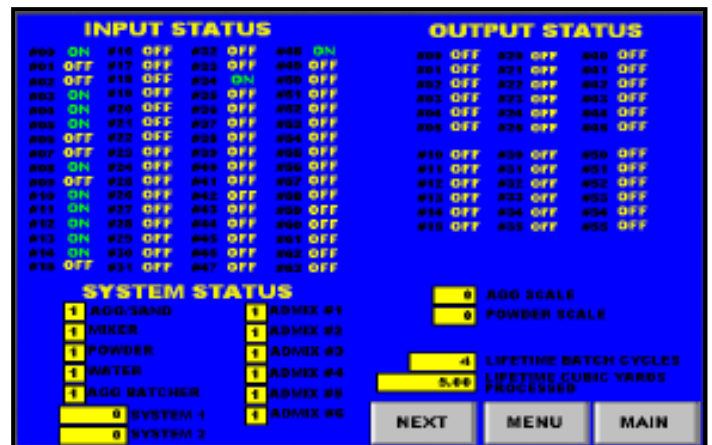
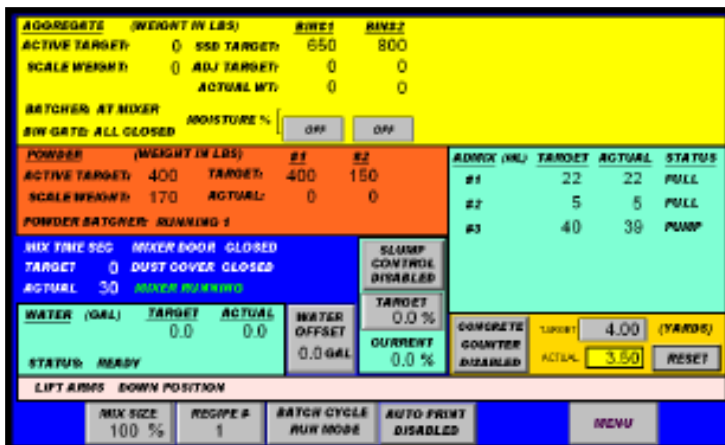
Materials batched and mixed with the touch of a button.

50 mix designs stored for instant retrieval

Adjustable set up parameters allow fine tuning

- 10" color touch-screen provides dynamic interface - the operator can change selected mix design or batch size with the touch of a button
- Detailed status screen for quick diagnostics

- Automatic scaling of mix designs for partial batches
- Control up to six aggregate materials; up to six liquid admixes and utilize up to three powder silos



- Automatic water control includes adjustment of target water based on aggregate moisture content
- Process alarms warn of abnormal batching conditions
- Built-in 'Concrete Counter' keeps track of how much volume you have batched



Manufactured by



828 4th Street
 Elk River, MN 55330
 Phone (763) 441-1581
 Fax (763) 441-1596

Easy Touch Level III Controls Provide a PC-Based Solution for Batch Plant Operation

- Multi-level password security prevents unauthorized operation
- Batch designs and data stored in SQL data base
- Material usage reporting a standard feature
- 500 mix designs stored for instant retrieval
- Ideal for Self Compacting Concrete

- 15" Color touch-screen computer with keyboard and printer
- Process alarms warn of abnormal batching conditions
- Uninterruptible power supply (UPS) protects your system during power loss or brown-out conditions
- Remote system support by Elk River Machine via phone modem or optional VPN ethernet
- Materials and mix designs can be assigned alpha-numeric names for easy identification
- Historical database keeps track of batch data and material records
- Control of up to six liquid admixtures; eight aggregate materials, and up to four powder silos
- Automatic water control includes adjustment of target water based on aggregate moisture content

RECIPE EDIT: TEST STA2

BIN 1 DROWN SAND 250 KG	ADMIX 1 DURAWALL 20 ML	POWDER 1 GRAY CEMENT 225 KG
BIN 2 WHITE SAND 0 KG	ADMIX 2 DURACON 12 0 ML	POWDER 2 FLYASH 0 KG
BIN 3 3/4 STONE 0 KG	ADMIX 3 DURACENT 17 0 ML	POWDER 3 WHITE CEMENT 0 KG

WATER 40.0 L

FINAL MIX TIME 10 SEC

SELECT RECIPE SAVE CANCEL

MENU MAIN

LAST BATCH MATERIAL

BIN	INGREDIENT NAME	ACTUAL KG	MOISTURE %	ADMIX	INGREDIENT NAME	ACTUAL ML
#1	DROWN SAND	250	5.00	#1	DURAWALL	20
#2	WHITE SAND	0	0.00	#2	DURACON 12	0
#3	3/4 STONE	0	0.00	#3	DURACENT 17	0

RECIPE TEST STA2
OF BATCHES 3

SILO	INGREDIENT NAME	ACTUAL KG
#1	GRAY CEMENT	232
#2	FLYASH	0
#3	WHITE CEMENT	0

WETTED WATER 27.0 L
 FREE WATER 13.0 L
 TOTAL WATER 40.0 L
 KG/POWDER RATIO 13.2 %

MIX TIME 10 SEC BATCH CYCLE TIME 2 MIN 17 SEC DISCHARGE DELAY TIME 0 SEC

PRINT TOTALS MENU MAIN



Manufactured by



828 4th Street
 Elk River, MN 55330
 Phone (763) 441-1581
 Fax (763) 441-1596

Easy Touch Viewer Utility is a SQL Database Integrated Into The Level III Control System

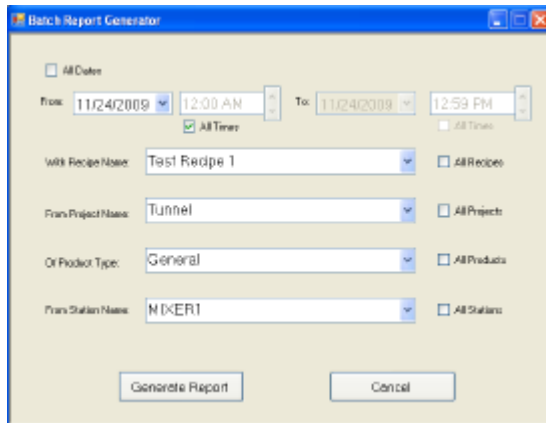
Multiple report formats included

- Individual batch tickets
- Recipe listing with estimated cost
- Material usage summary with total cost
- Production summary provides a quick listing of your daily work
- Keep historical record of ALL your production data - print reports at any time

Your Batch Ticket

STATION NAME	1	BATCH#	240	BATCH SIZE	1	MIX CYCLE TIME MIN	11.200	19.800
RECIPE NAME	RDG120	TOTAL BATCH WEIGHT	300	KG		DATE/TIME	2/10/2009	10:38 AM
AGGREGATES (KG)								
LOCATION	DIN#1	DIN#2	DIN#3	DIN#4				
NAME	DIN 1	DIN 2	DIN 3	DIN 4				
SSD TARGET	205	205	0	0				
ADJ TARGET	206	208	0	0				
ACTUAL WGT	206	208	0	0				
DIFFER %	1.9	4.4	0	0				
FREE SODIUM %	1.1	1.2	0	0				
ABSORPTION %	0	0	0	0				
Q30	0.83	0.84	0	0				
ADJUSTURES (KG)								
LOCATION	BOTTLE#1	BOTTLE#2	BOTTLE#3					
NAME	ADJ#1	ADJ#2	ADJ#3					
TARGET	20	0	0					
ACTUAL	30	0	0					
DIFFER %	20	0	0					
Q2/GWT	1.9	0	0					
POWDER (KG)								
LOCATION	SLO#1	SLO#2						
NAME	POWDER 1	POWDER 2						
TARGET	205	0						
ACTUAL	200	0						
DIFFER %	10.2	0						
WATER (KG)								
						TARGET	200	
						MIXED WATER	21.5	
						FREE WATER IN ADD	0.5	
						MANUAL TRIM		
						WATER OFFSET ADJ.	0	

Various methods of filtering the data are provided - sort by date range, call station, recipe, project and more.



11/24/2009
12:49:55 PM

Batch#	Recipe	Size	Date	Time	Station	Project
1	Test Recipe 1	1	11/23/2009	15:16:22	MIKER1	General
2	Test Recipe 1	1	11/23/2009	15:23:24	MIKER1	General
3	Test Recipe2	1	11/23/2009	15:25:04	MIKER2	General
4	Test Recipe3	1	11/23/2009	15:25:40	MIKER3	General
5	Test Recipe 1	1	11/23/2009	15:38:50	MIKER1	General
Number of Batches		Total Volume Batched				
5		5.00				



Manufactured by

ERMC

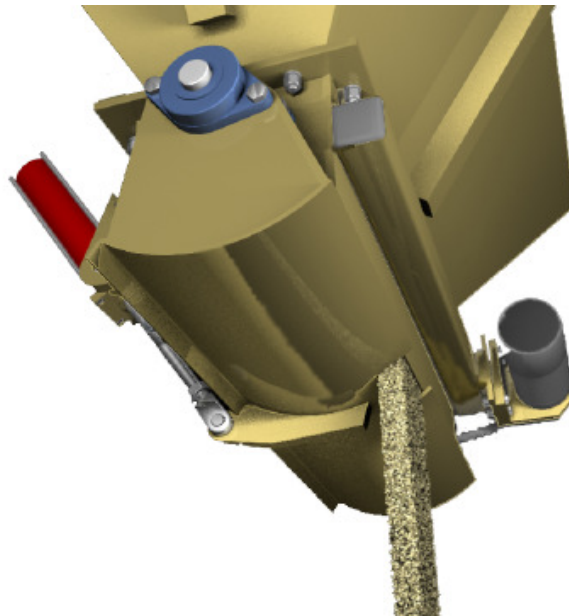
828 4th Street
Elk River, MN 55330
Phone (763) 441-1581
Fax (763) 441-1596

Call us to discuss your Batch Plant Solution!

Optional features available for Acromix Control Systems

- Thermal printer mounted in control panel (Level II systems only)
- Interface with auxiliary plant equipment (conveyors, pumps, indicators, dry-cast hoppers)
- Microwave bin and / or mixer moisture probes for automatic moisture and material compensation
- Multiple methods of automatic slump control
- Expanded mix design storage
- Expanded reports to include manually batched materials
- Interface with color dosing controls
- High speed counter for high-volume water (greater than 70GPM) and large admix dosing

Ask about our patented *Acro-Meter* bin gate – where ultra-fine measurement of aggregate is critical; field-tested and proven within one pound of measured material



We can provide mixing and batching equipment to meet plant certification requirements

www.ermc.com