



Manufactured by

**ERMC**

828 4<sup>th</sup> Street  
Elk River, MN 55330  
Phone (763) 441-1581  
Fax (763) 441-1596

## Mixers and Mixer Options

Overhead Cement  
Batching

Mixer Stand

Operator Platform

Ladder and Railing

Manual or  
Automatic Water  
Control

*Easy-Touch*  
Automation



End Wall  
Scrapers

Hydraulic  
Discharge  
Door

Hydraulic  
Discharge  
Chute

Motor  
Horsepower  
Upgrades

***Acromix Horizontal Shaft Mixers* employ a time tested and proven mixing action with modern design and construction**

[www.ermc.com](http://www.ermc.com)



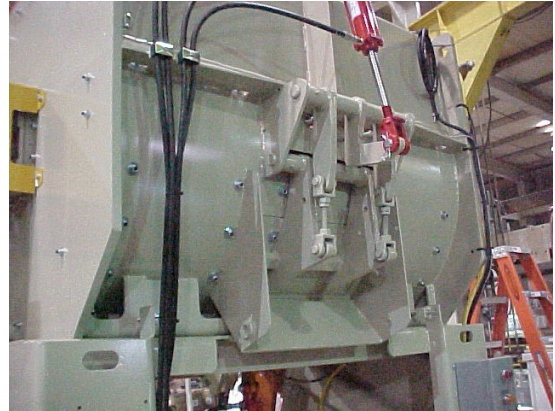
Manufactured by



828 4<sup>th</sup> Street  
Elk River, MN 55330  
Phone (763) 441-1581  
Fax (763) 441-1596



The efficient planetary drive and gear box is coupled to a full sized main mixer shaft



Standard construction includes heavy-duty door linkage and thick, steel mixer sidewalls



*Spiral Ribbon* blades, *Ni-Hard* segmental drum liners and *HARDOX* sidewall liners are standard issue on Acromix mixers



Acromix horizontal shaft mixers may be purchased with paddle blades, side wall scrapers and *HARDOX* abrasion resistant steel liners if desired.